

Coalesce

Maya Scarlett

SS'19

coalesce

/Ko-ah-lease/

verb

come together to form one MaS (mass) or whole.

“the motives coalesced into an absolute madness”

synonyms: unite, join together, combine, merge, fuse, mingle, meld, blend, intermingle, knit (together), amalgamate, consolidate, integrate, affiliate, link up, homogenize, synthesize, converge;

P/04
Coalesce

P/06
Mimi

P/10
Tiana

What's inside

P/14
Tanya

P/18
How to order

P/20
Pricing & Payment

Hey!



@mayascarlettex

I'm an independent designer from London, with deep roots in my Caribbean heritage - as a result I love everything that is Carnival.

I'm constantly driven to merge these two worlds together - the gritty urban decadence of London and the vibrant colours, designs and emotions tied to the carnival experience. This idea sparked the birth of Coalesce.

Nothing screams carnival like costumes and for women, wirebras. Within my brand "Maya Scarlette", my approach to creating pieces considers that every woman is different and has her own unique take on what works for her.

This is why I'm driven to make customisable and hand crafted wirebra tailored to fit the body regardless of size, weight, age or gender.



MIMI

Militia

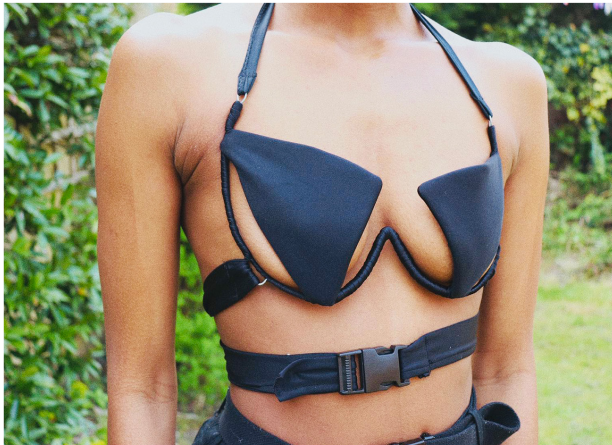
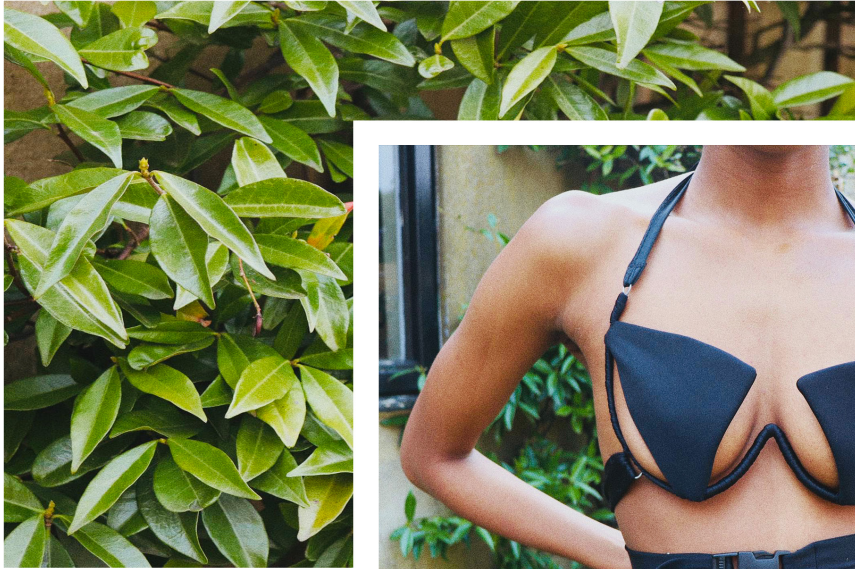
The Mimi bra is inspired by my best friend, who is the most amazing makeup artist. I love how he manipulates natural lines on a face to frame the most amazing angles when he works.

This bra pays homage to him in so many ways - from the bright and bold fabric choices, to the cheeky peek-a-boo undercuts which are inspired by his iconic cut crease eye look.

I chose to introduce the add-on utility buckle harness as an accessory, because his fashion aesthetic always pays homage to military inspired silhouettes or pieces.

The Mimi bra is the perfect look for anyone who defines themselves by elevating simple clothing and putting their own unique spin on streetwear.

Coalesce SS'19



Fabric



3M strip

3M is a reflective yarn designed for safety, it is built using a treated silver cross weave that creates a retroreflective fabric that more-or-less reflects light back to its source.

The strip is laid against black lycra, to give a sports wear feel.

Fabric details:
Lycra

Strip

- 65% Polyester
- 35% Cotton



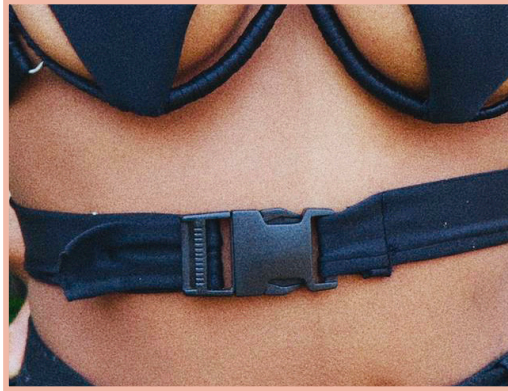
Limelight Green Lycra

Lycra is globally recognised for its properties that elevate stretch and ease of movement. It adds easy comfort and allows for freedom of movement.

Sourced from an independent fabric supplier in East London, that specialises in fabrics for dance and theatre.

Fabric details:

- 80% Nylon
- 20% Lycra



Utility belt

The Utility belt elevates the militia look.

The belt comes in your chosen fabric, and is fitted with Ladderlock buckles.

Ladderlock buckles make it easier to slide allows you to slide the belt around your waist and get a snug fit.



TIANA

Neo-Classic

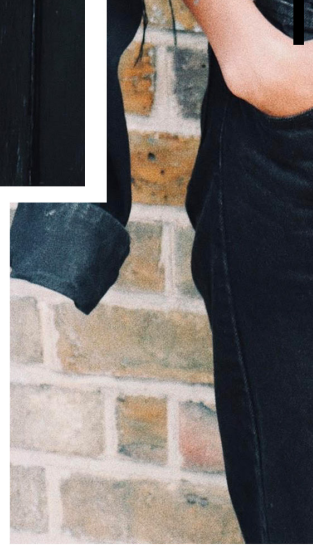
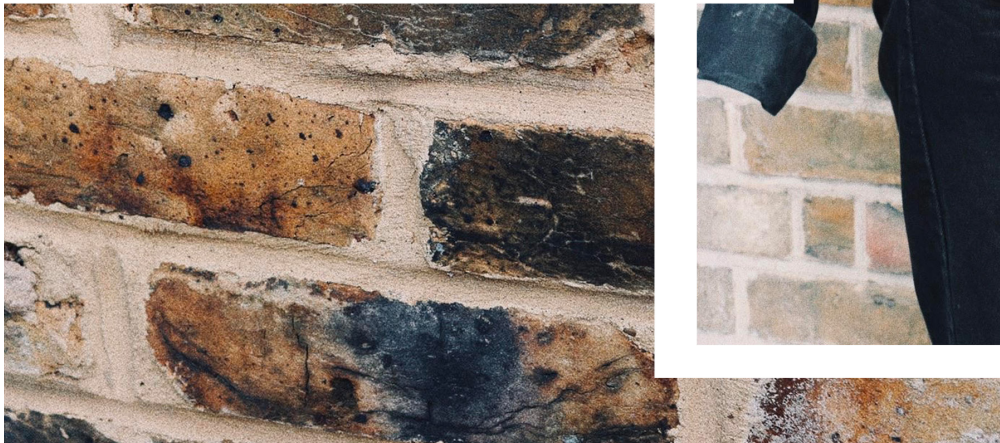
I'm surrounded and inspired by some amazingly talented people that inspire my perspective as a designer, so the Tiana - a take on the classic triangle bra was almost a no-brainer.

Tiana is an amazing jazz/soul singer who brings a modern and urban take to what was previously thought as a typically traditional genre. This drove everything about conceptualising this bra.

Her dress sense is predominantly 90s inspired, so the nod in fabric choice - two types of Plaid in one bra was organic. Within the bra design, I wanted people to be able to choose either fabric or merge both :)

Teaming this up with a wrap around button design, complimented the idea perfectly. As opposed to a simple tie around, I felt like people should be able to button the bra in place... A nod to the classic button up shirt.

Coalesce SS'19



Fabric



Grey Plaid

Braelach medium plaid formed of a mixed wool blend. The Crail pattern infuses black and duo tones of grey (light and dark).

The 'sett' is compromised predominantly of black wool thread, with intertwines of light grey and dark grey that form the checkered pattern associated with a plaid print.

Fabric details:

- 90% Wool
- 10% Polyamide



Green Plaid

Breelach medium plaid formed of a mixed wool blend. The crail pattern infuses bottle green, navy blue, azurre, yellow and white wool threads..

The main colour in the 'sett' is the bottle green, with intertwines of the navy blue, azurre, yellow and white threads used as accents. A subtle yet bold print. .

Fabric details:

- 90% Wool
- 10% Polyamide



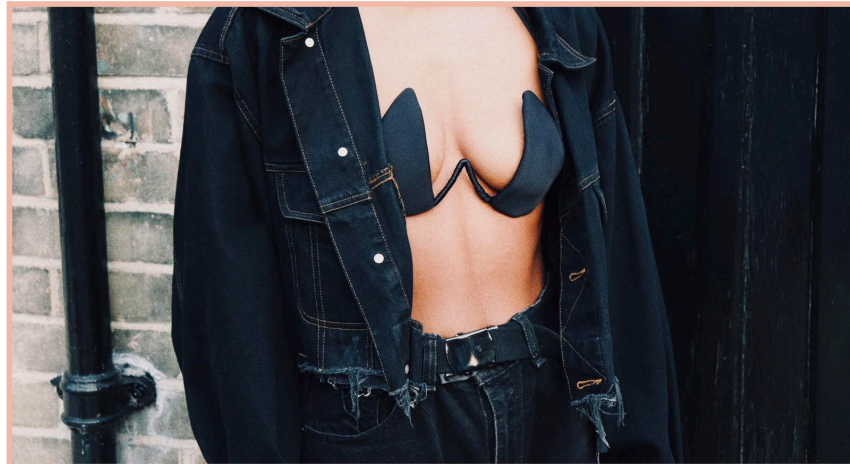
Button Strip

The button strip mimics the functions of having a shirt with buttons.

The button strip can be attached to the bra and is specifically designed to fit the wearers waist-size. Ensuring that you are buttoned in, the right way.

The button strip fabric is dependent on the fabric choice on your bra design.

Put a fun twist on your classic bra, by adding the essential button down as a cheeky homage to compliment the look.



TANYA

Wild Child

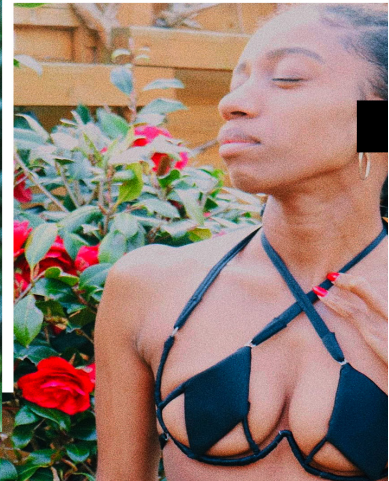
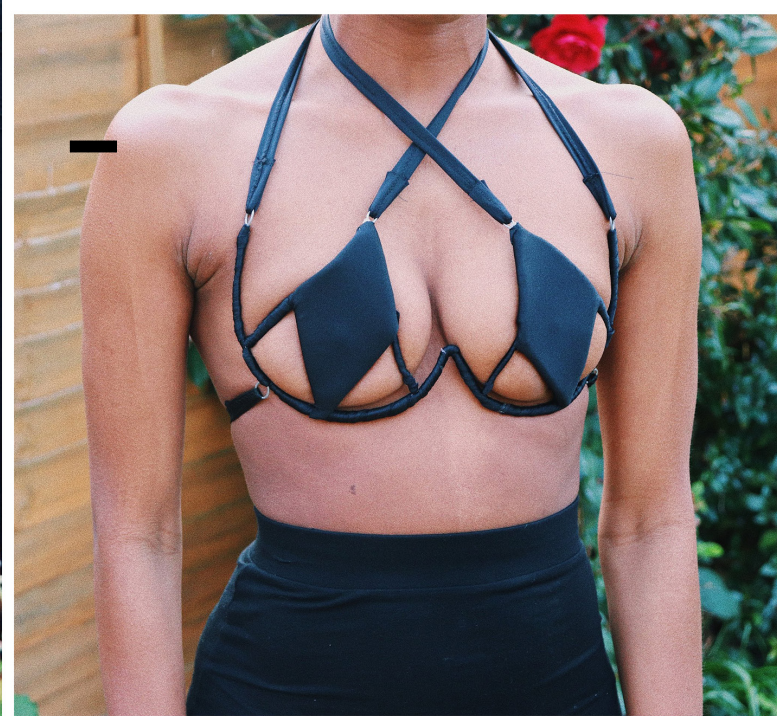
Tanya is the resident wild-child in my friend circle, that being said she is also extremely grounded, and is one of those people who has found that peace of being unapologetic and comfortable in her own skin. So this is a nod to her.

I wanted to create something that highlighted Tanya's duality and also evoked the importance spirituality (star signs, vibrations and energy), plays in her life. I started drawing out crystals (which she loves) and drew massive inspiration from their shapes, sparking the idea for the bra to almost be a cut-out piece of a bigger puzzle.

The cheeky glimpses are there to acknowledge her wild side in its entirety. I also wanted to show how all these elements tied together to create and form balance - double straps made sense.

The fabric choices in an earth toned -double sided-sequin and the Kente brought the idea of Earth and being grounded full-circle.

Coalesce SS'19



Fabric



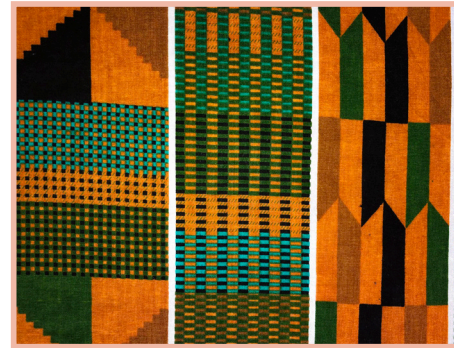
Reversible Sequin

Also known as mermaid sequinned fabric, this material features double sided sequins- shiny bronze on one side and a matte gold finish on a black jersey base.

Change the colour of the fabric by just running your hands and flipping the sequin the opposite direction.

Fabric details:

- Sequins
- Poly satin base



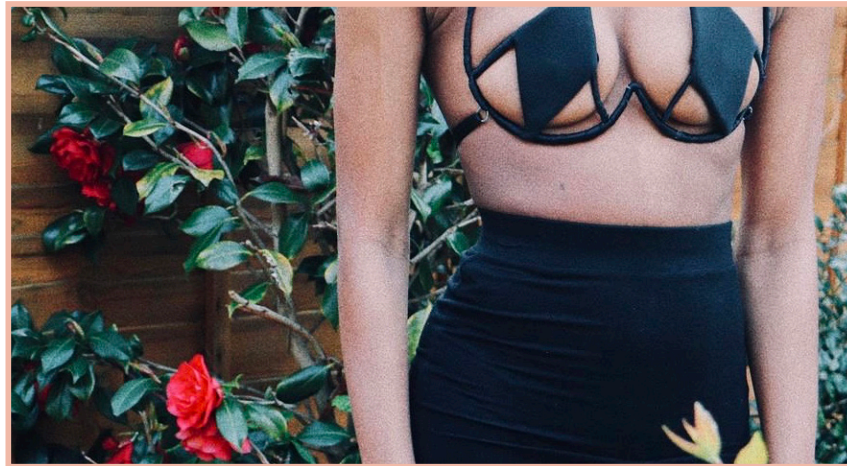
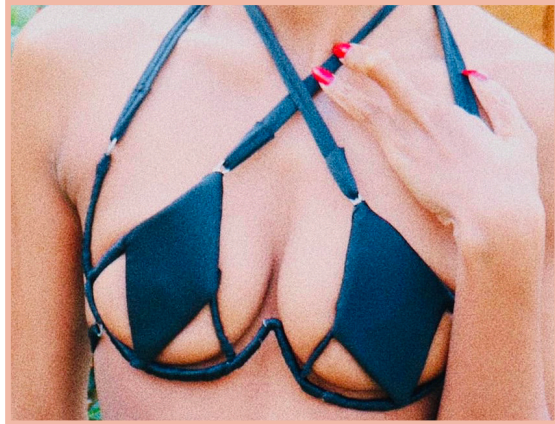
Kente

Kente is a hand woven silk and cotton cloth originating in South Ghana, but its use, influence, and popularity spread globally.

This kente print is depicted from handwoven ewe kente fabric made with cotton fabric is multi coloured with gold being the main colour.

Fabric details:

- 60% Cotton
- 40% Woven Silk



Double-crossed

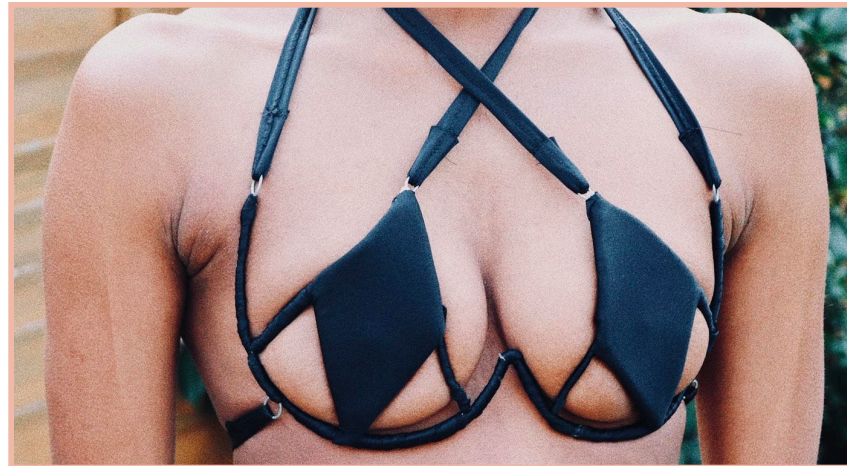
The double crossed neck tie is the perfect accessory for a statement look.

The neck tie fabric straps are available in Kente and lycra.

Kente fabric details on the previous page.

Lycra fabric details:

- 80% Nylon
- 20% Lycra



HOW TO ORDER



Pick a design

Whether you connect with the bra origin story, or like the design or simply want to slay with a look. I truly want to help you create a piece that is a reflection of you.

Step 1



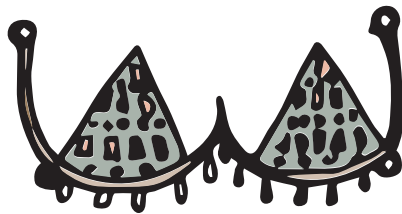
Choose your fabric

Pick one of the two fabric choices provided for each bra.

The Tiana bra allows you to mix both plaids, or choose to work with only one.

Step 2

HOW TO ORDER

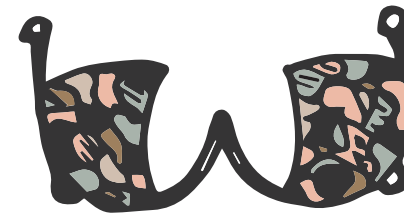


Accessory

Decide whether you want the accessory tied to the bra.

If you don't, you get a simple (bikini style) tie-around with your bra.

Step 3



Sizing

Bras are created based on the industry standard cup sizes.

I'm super big on inclusivity, so bigger busts always welcome.

Step 4

PRICING



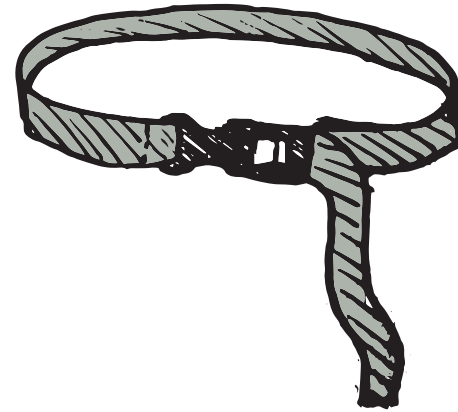
Bra

Bras are based on cup sizes, each piece has been hand-made by me.

Inclusive sizing - so yes! Hit me up!

Each standard bra - comes with standard bikini ties (neck and waist)

£50



Accessory

Should you choose to add an accessory to your bra, I will contact you for specific measurements, to ensure it fits your body the way it should.

£10

PAYMENT DETAILS

Making a payment

All payments should be made in full to my paypal - mayascarlettedesigns@gmail.com

Paypal is the best way to protect you and I during the transaction.

Delivery

Your ordered bra should be with you within two weeks of payment. There is a delivery charge of £5 .

Returns Policy

As every bra is custom made to order, all sales are final. I am available to ask for advice on your bra and fitting once a payment is made. You can reach me via the chatbot on my web page or email me in the link provided once you place an order.

Tap to Order

coalesce

/Ko-ah-lease/

verb

come together to form one MaS (mass) or whole.

"the motives coalesced into an absolute madness"

synonyms: unite, join together, combine, merge, fuse, mingle, meld, blend, intermingle, knit (together), amalgamate, consolidate, integrate, affiliate, link up, homogenize, synthesize, converge;

SS'19

Coalesce
by [unclear]